



## Meetings, Events and Catering

You'll like the space we have to offer. We have plenty of it with approximately 6800 square feet of flexible meeting space for a maximum of 440. In fact, we are the largest convention centre in the Eastern Arctic equipped with the latest technologies, equipment, innovative catering menus and dedicated Event Manager on hand to ensure your event is a success.

### Catering and Events Facilities

- 2 ballrooms that may be used individually or combined to accommodate events from 40 to 440
- 2 meetings rooms that accommodate 10 to 60

### Conference and Meeting Services

- Koojesse Ballroom has a bay view with plenty of natural light with large south facing windows
- Fireplace in the Koojesse North room creates a warm atmosphere for dinners and receptions
- Wireless connectivity
- Dedicated Event Manager for each event
- Clustered location of meeting rooms to facilitate breakout and parallel meetings
- Complimentary parking
- Tailor made menus to meet the specific needs of every meeting
- On-site audiovisual

### Capacity Chart



Meeting Rooms	Dimensions	Ceiling Height	Sq. ft. Area	Banquet	Board Room	Class Room	U-Shape	Hollow	Theatre
Kitikmeot	21'x15'	9'10"	315	18	18	12	13	18	12-16
Baffin	40'x30'	9'10"	1200	60	44	40	36	44	45
Koojesse (North)	74'x36'	13' & 9' beneath the Beams	2664	180	84	154	70	84	220
Koojesse (South)	74'x36'	13' & 10' beneath the Beams	2664	180	84	154	70	84	220
Koojesse Ballroom	74'x76'	As Per Above	5772	360	168	308	140	168	440
Total			6843	438	230	360	189	230	501



**KOOJESSE SOUTH**

74' x 36'

**KOOJESSE NORTH**

74' x 36'

**FROB KITCHEN**

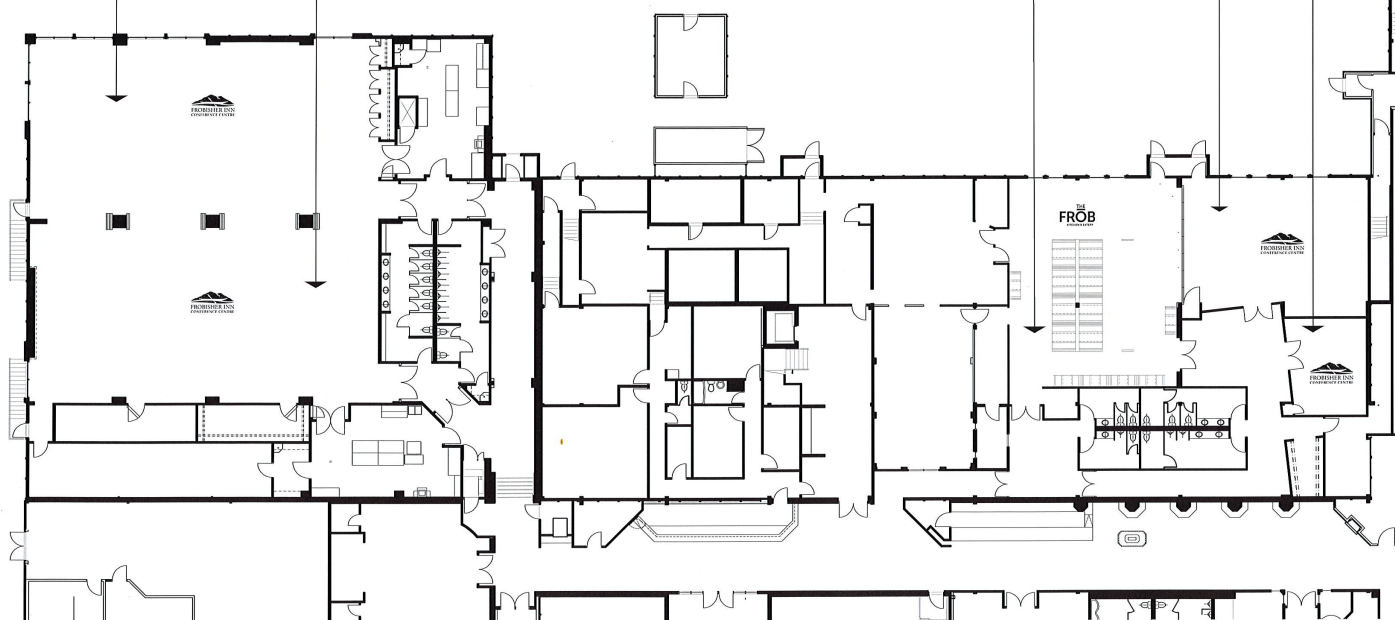
36' x 44'

**KITIKMEOT**

15' x 21'

**BAFFIN**

40' x 30'



**Reservations** .....

Reservations Line: 1.877.422.9422

reservations@frobisherinn.com | www.frobisherinn.com

Inquiries: hm@frobisherinn.com